



MAINTENANCE MANUAL

Pre-filters Page 17

High Pressure Pump Page 17

PRE-FILTERS

▶▶▶ Use only 5-micron 10" polyester filter elements, such as Katadyne 8012861. These can be found at most marine and water supply stores.

Pre-filters should be replaced regularly. To determine the status of your Pre-filter element, use the Pre-filter Pressure Gauge on the Control Panel. This gauge should stay at or above zero PSI when the system is in operation. If the gauge shows a negative pressure or a vacuum, it's time to replace the element.

Replacement Procedure

- 1 Shut down the system and ensure that the Sea Water Lift Pump is OFF and through-hull is closed.
- 2 Unscrew the Pre-filter Housing and remove the Pre-filter element.
- 3 Discard the used element and install a new 5-micron polyester element.
- 4 Reassemble by securely screwing the Pre-filter Housing back together.
- 5 When restarting the system, be sure to check the Pre-filter Housing for leaks.

HIGH PRESSURE PUMP

Your watermaker system includes an AR North America High Pressure Pump. Designed for long life, the pump should provide years of trouble-free operation if maintained and inspected regularly.

During installation, the gear case was filled with 9.81 oz. ISO 100 - NA 30 weight hydraulic oil and the bolts and belts were adjusted. It is good practice to inspect the belt and check the gear case oil every 20 hours of operation.

See the following pages for information regarding the electric motor.

1HP Electric Motor Datasheet (Standard Kit Model G-20)

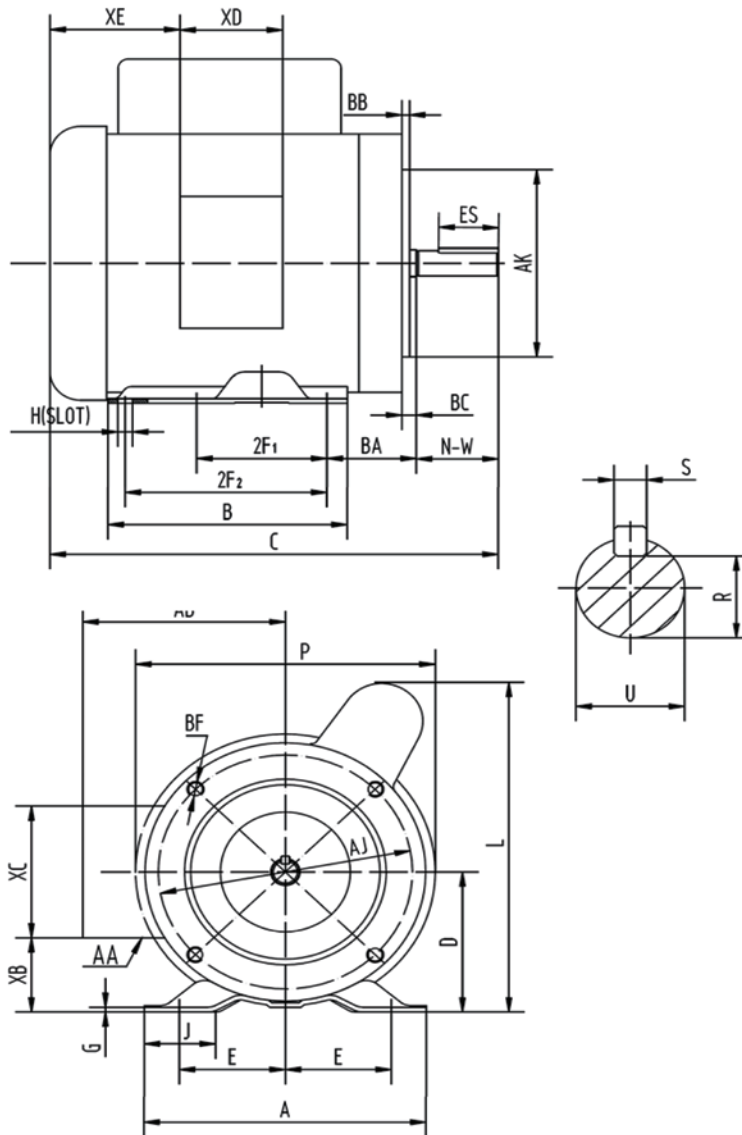
Horsepower	1
RPM / poles	1800 / 4
Voltage / phase	115 / 208-230V / 1
Frame	56C
Enclosure	TEFC
Frequency	60Hz
Rated speed	1725 RPM
Full load amps	13.6 / 7.5 - 6.8 A
Duty cycle	Continuous
Service factor	1.15
Insulation class	F
Base type	C-Face - Removable
Shaft	Keyed
DE bearing	6205
ODE bearing	6203
Mounting	F1
Rotation	Clockwise / Counterclockwise
Overload	Manual
Start capacitor	Ø42 x 80mm ² / 300 uF / 125V
Run capacitor	---
Wire type	Loose Wire
Wire housing	Junction Box
Connection diagram	115 / 208 - 230V - 6 Lead
Approx. weight	34 lbs.
FL efficiency	68.0%

1HP Electric Motor Dimensions (Standard Kit Model G-20)

* All dimensions are in inches.

MOUNTING					A	B	C	D	G	J	L	P	AA	AB
E	2F1	2F2	H	BA										
2.44	3	5	0.34	2.75	6.5	6.5	13.4	3.5	0.12	1.73	8.07	6.9	1/2	5.35

KEY		KEYSEAT	FLANGE				SHAFT		TERMINAL BOX				
BC	ES	S	R	AJ	AK	BB	BF	N-W	U	XB	XC	XD	XE
0.19	1.41	0.188	0.517	5.875	4.5	0.16	3/8-16	1.88	0.625	1.65	3.7	3.23	285



2HP Electric Motor Datasheet (Premium Kit Model G-40)

Horsepower	2
RPM / poles	1800 / 4
Voltage / phase	115 / 208-230V / 1
Frame	56C
Enclosure	TEFC
Frequency	60Hz
Rated speed	1725 RPM
Full load amps	20.0 / 11.1 - 10.0 A
Duty cycle	Continuous
Service factor	1.15
Insulation class	F
Base type	C-Face - Removable
Shaft	Keyed
DE bearing	6205
ODE bearing	6203
Mounting	F1
Rotation	Clockwise / Counterclockwise
Overload	Manual
Start capacitor	Ø42 x 80mm ² / 400 uF / 165V
Run capacitor	Ø45 x 90mm ² / 40 uF / 450V
Wire type	Loose Wire
Wire housing	Junction Box
Connection diagram	115 / 208 - 230V - 6 Lead
Approx. weight	43 lbs.
FL efficiency	73.0%

2HP Electric Motor Dimensions (Premium Kit Model G-40)

* All dimensions are in inches.

MOUNTING					A	B	C	D	G	J	L	P	AA	AB
E	2F ₁	2F ₂	H	BA	A	B	C	D	G	J	L	P	AA	AB
2.44	3	5	0.34	2.75	6.5	6.5	14.88	3.5	0.12	1.73	8.5	6.9	1/2	5.35

KEY		KEYSEAT	FLANGE				SHAFT		TERMINAL BOX				
BC	ES	S	R	AJ	AK	BB	BF	N-W	U	XB	XC	XD	XE
0.19	1.41	0.188	0.517	5.875	4.5	0.16	³ / ₈ -16	1.88	0.625	1.65	3.7	3.23	285

